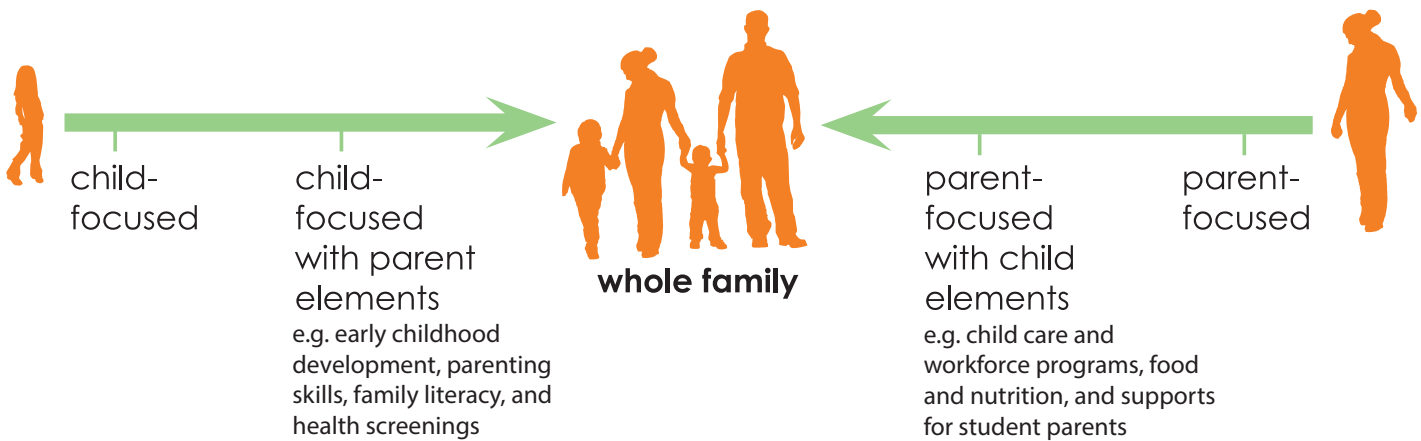
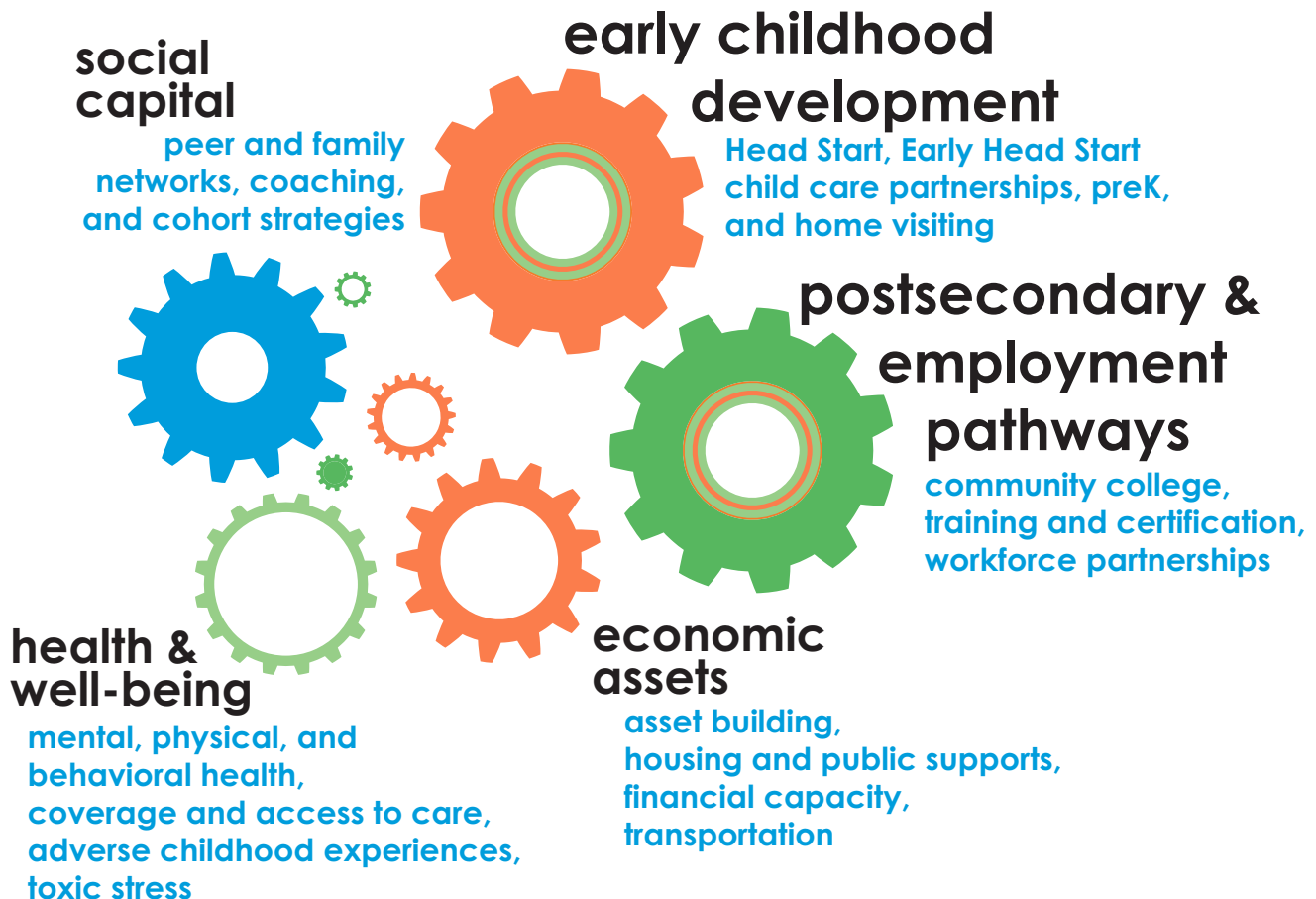


Trying on a Two-Generation Approach

Where is your work on the two-generation continuum?



Which of these core components of a two-generation approach do you address?



Trying on a Two-Generation Approach

Guiding Questions

- First, turn the page over and mark where you are today on the two-generation continuum and which of the core components your work or work you support currently addresses.
- Next, imagine your community wants to embark on a two-generation approach.
- From your perspective and role (community or business leader, program designer, volunteer...), how might you respond to some of the questions below?

What are the **CHALLENGES** facing the families you serve and/or care about?

Where have you seen **EXAMPLES** of two-generation work in your community?

What might be the **VALUE** of doing this type of work in your community?

What **PARTNERS** are needed?

What **RESOURCES** are needed? What **RESOURCES** would you bring?

What is the biggest **OPPORTUNITY** you see? What is the biggest **CHALLENGE** to this work?